



Don't get burned regarding Fire Codes...

Actual A & B rated certification available!

National and local fire codes are ever changing, and many codes are now requiring HDPE Solid Plastic toilet partitions to carry an A or B fire rating. Metpar is aligned with the world leader in Class A and Class B material certification, hence, the certification comes directly from the raw material manufacturer. This becomes more meaningful than a certification supplied by a fabricator, as they may just self certify simply to "get the order."

Metpar offers a complete line of Solid Plastic (HDPE) toilet compartments that meet the ASTM E84-94 criteria for Class A and Class B. See below for available colors.



Description of Test:

The ASTM E84-94 test method is intended to compare the surface flame spread and smoke developed measurements to those obtained from the tests of mineral fiber cement board and select grade red oak flooring. The results are expressed as Flame Spread Index and Smoke Developed Index.



Results

Class A Interior Finish:

Flame Spread Index 0-25, Smoke Developed Index 0-450. Includes any material classified at 25 or less on the flame spread test scale and 450 or less on the smoke developed test scale. Any element thereof when so tested shall not continue to propagate fire.

Class B Interior Finish:

Flame Spread Index 26-75, Smoke Developed Index 0-450. Includes any material classified at 25 but not more than 76 on the flame spread test scale and 450 or less on the smoke developed test scale.

So next time you need material certification for class A or class B solid plastic toilet partitions, you can specify Metpar with confidence. Metpar is the most recognized brand name in commercial toilet partitions.

5 designer colors available Class A or Class B



Royal Blue



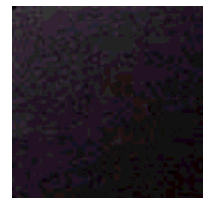
Desert Beige



Grey



Ebony & Ivory



Black

Class A & B available on select Solid Plastic (HDPE). Call, click, or write to: