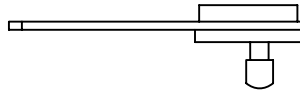


CONCEALED LATCH INSTALLATION PROCEDURE

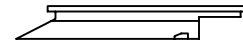
for Powder Shield or Stainless Steel doors - Page 1 of 2



Interior Latch
Part-A



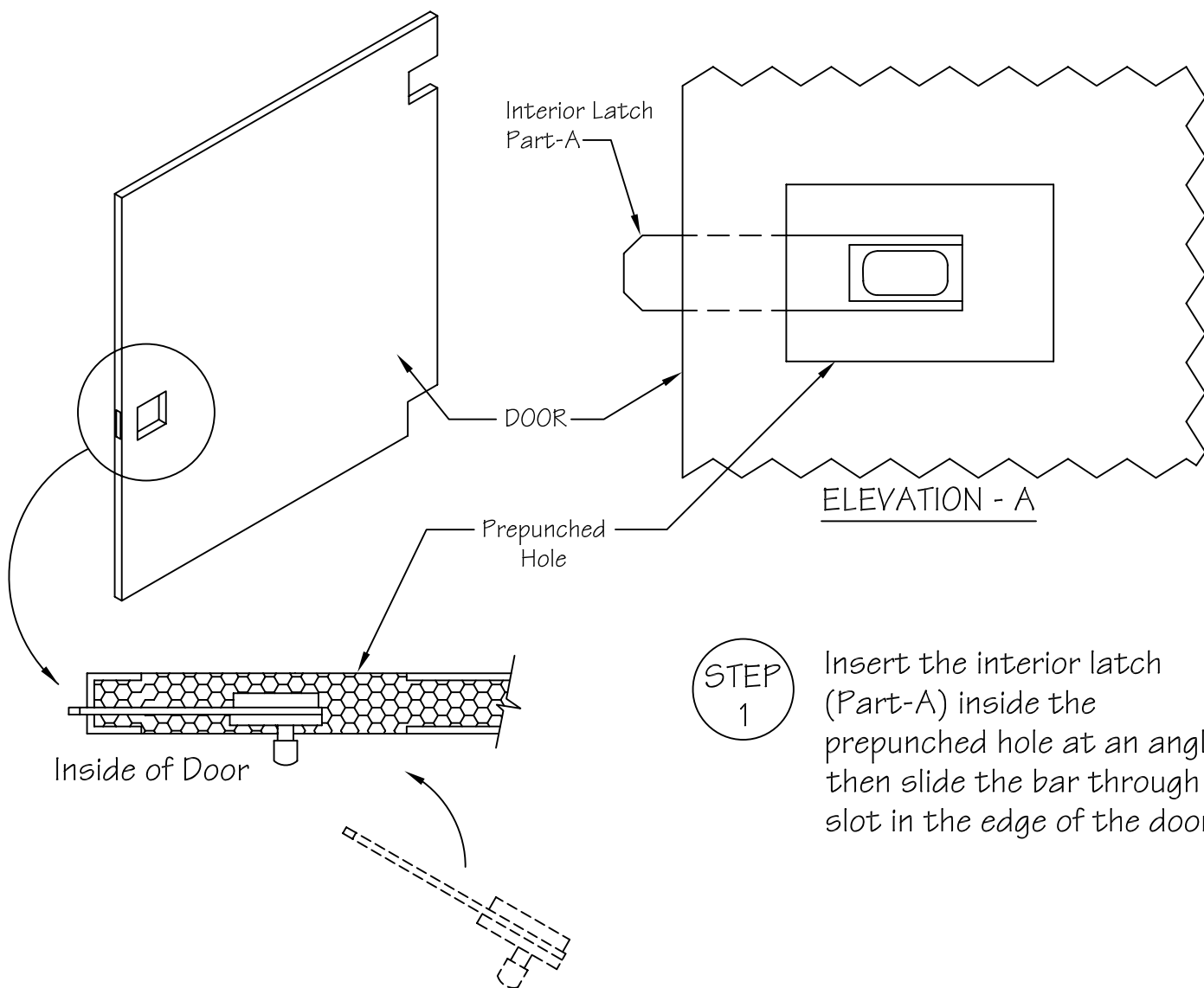
Inside Cover
Part-B



Outside Cover
Part-C

IMPORTANT: Install the door first!

Also... be sure that the knob from Part-A is inside the stall.



Insert the interior latch (Part-A) inside the prepunched hole at an angle, then slide the bar through the slot in the edge of the door.

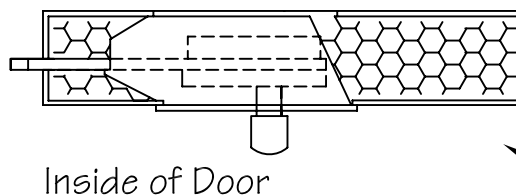


METPAR CORP.

95 State Street, Westbury, LI, NY 11590

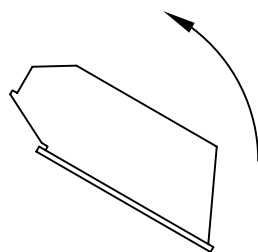
Tel: 516-333-2600 ~ Fax: 516-333-2618 ~ www.Metpar.com ~ Sales@Metpar.com

STEP
2

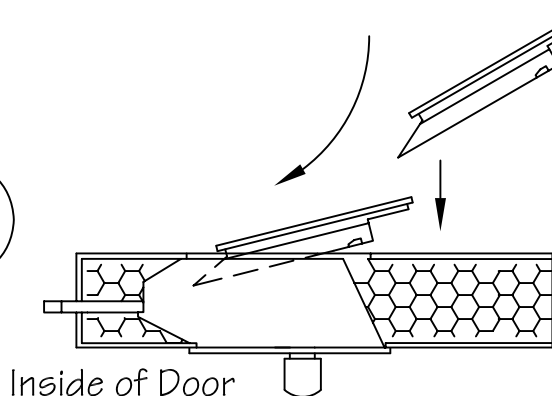


Inside of Door

Hold the slide bar and slide the Inside Cover (Part-B) through the hole and over the Interior Latch (Part-A). The handle will come through the rectangular hole in the cover (Part-B).

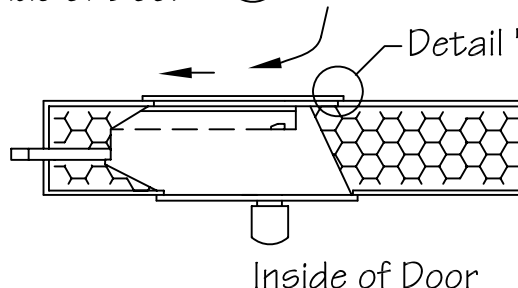


STEP
3



Inside of Door

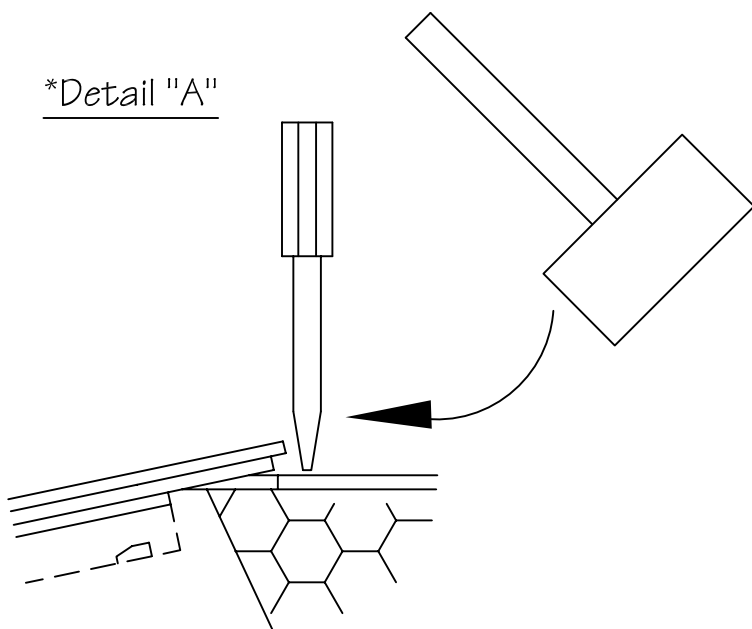
Hold the knob and slide the Outside Cover (Part-C) into the opening. Slide the Outside Cover (Part-C) forward all the way until it snaps firmly into place. If your finger pressure is not adequate, carefully tap it into place using a mallet and the flat edge of a screwdriver against the *cover's edge.



Inside of Door

Detail "A" *

*Detail "A"



INSTALLATION NOTE:

The slide bar of the Interior Latch (Part-A) will engage within the slot of the strike & keeper (shown at right). After the strike & keeper has been installed, **use a mallet to drive a screwdriver through the slot.** This will displace the edge molding of the pilaster and allow greater travel of the slide bar.



METPAR CORP.

95 State Street, Westbury, LI, NY 11590

Tel: 516-333-2600 ~ Fax: 516-333-2618 ~ www.Metpar.com ~ Sales@Metpar.com