



METPAR POLLY® SPR (HDPE) TOILET ENCLOSURES

The Dorian Max – Type FT700M - Floor Mounted

Maximum Privacy Style

MATERIALS: Polly® SPR – Solid Polymer Resin (Heavy Duty Polyethylene)

THICKNESS: Doors..... Finished to 1" (25.4mm) at 72" (1828.8) high
Panels..... Finished to 1" (25.4mm) at 72" (1828.8) high
Pilasters..... Finished to 1" (25.4mm) at 78" (1981.2) high

CONSTRUCTION:

Doors:

Finished to 1" (25.4mm) thick, all edges shall have a 0.250" (6.4mm) radius. All corners shall have a ½" (13mm) radius. All doors shall include an aluminum heat sink integrated into the bottom of the door.

Panels:

Finished to 1" (25.4mm) thick, all edges shall have a 0.250" (6.4mm) radius and all corners shall have a ½" (13mm) radius. All panels shall include an aluminum heat sink integrated into the bottom of the panel.

Pilasters:

Finished to 1" (25.4mm) thick and 70" (1778mm) high, all edges shall have a 0.250" (6.4mm) radius. Pilasters are to be secured to the floor by a 3/8" (9.525) steel anchor bar mechanism. Tension nuts are used to apply equal and opposite pressure to all points of mounting system. Zinc plated 3/8" (9.525) diameter studs, lockwashers, nuts and lead expansion shields are provided. Pilaster mounting shall be concealed with a 3" (76mm), 20 gauge stainless steel floor shoe.

BRACKETS:

All connections at pilaster-to-wall and panel-to-wall shall be secured with full height aluminum angles. Panel-to-pilaster connections secured with full height U-Channels. All screws shall be non-ferrous with a tamper-proof pin head.

DOOR HARDWARE:

All doors shall have a full length 16 gauge stainless steel MultiCam® hinge fastened with tamper-proof pin head fasteners at each leaf. The door stop shall consist of a surface mounted aluminum strike and keeper coupled with the full height rabbet edge on the door and pilaster for maximum privacy. Remaining door hardware, such as the surface slide latch, door pull, etc., shall be aluminum with a bright polished finish.

OPTIONAL FEATURES:

Aluminum curtain glides and curtains. Polly dressing seats. Full height stainless steel angles and U-brackets. Aluminum wraparound hinges. Fire resistant grades of material.

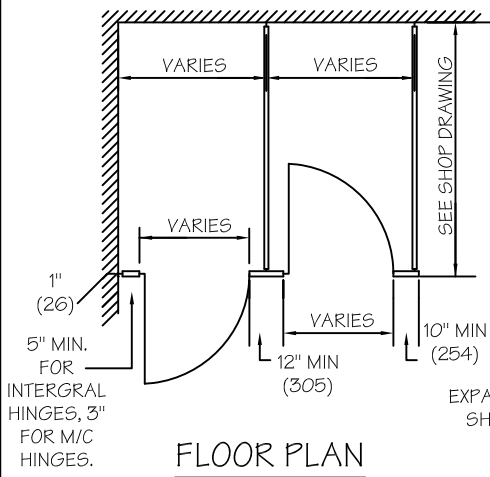


95 State Street, Westbury, New York USA 11590

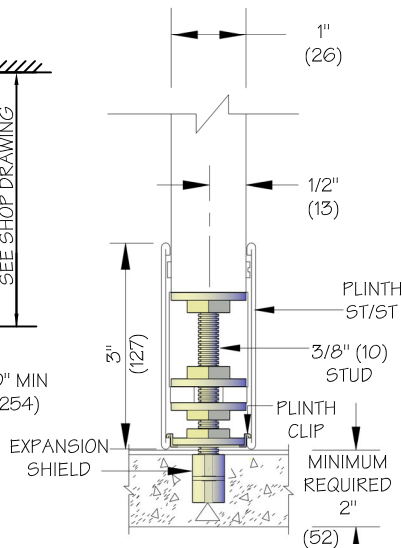
Tel: 516-333-2600 ~ Fax: 516-333-2618

www.Metpar.com ~ Sales@Metpar.com

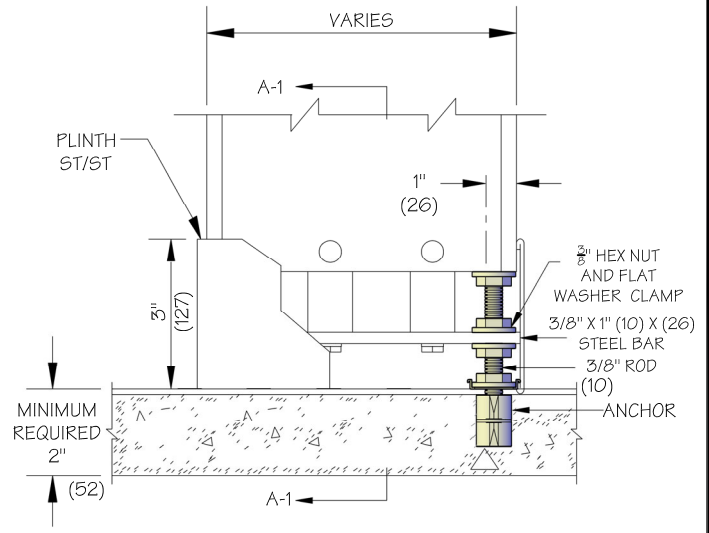
DIMENSIONS IN ()= MILLIMETERS



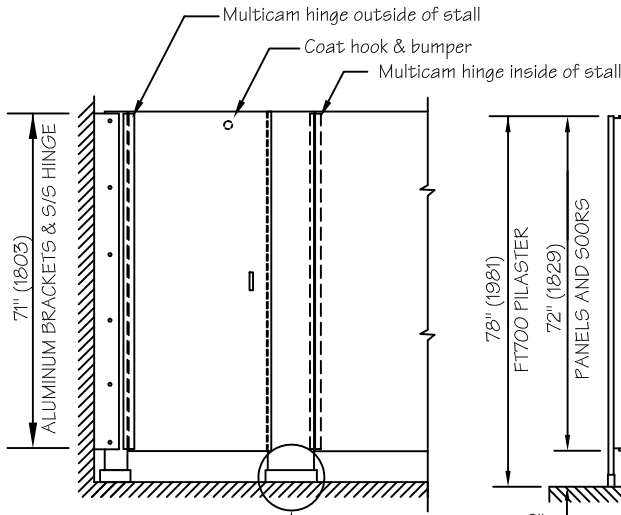
FLOOR PLAN



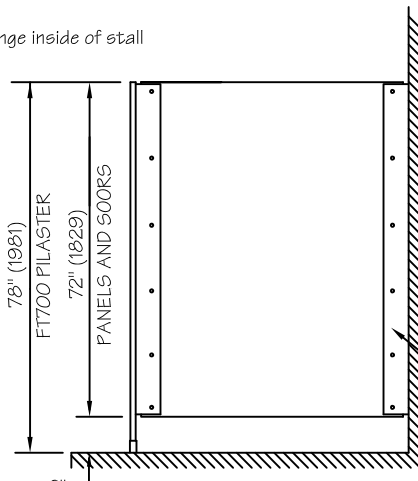
SECTION-A-1



DETAIL A

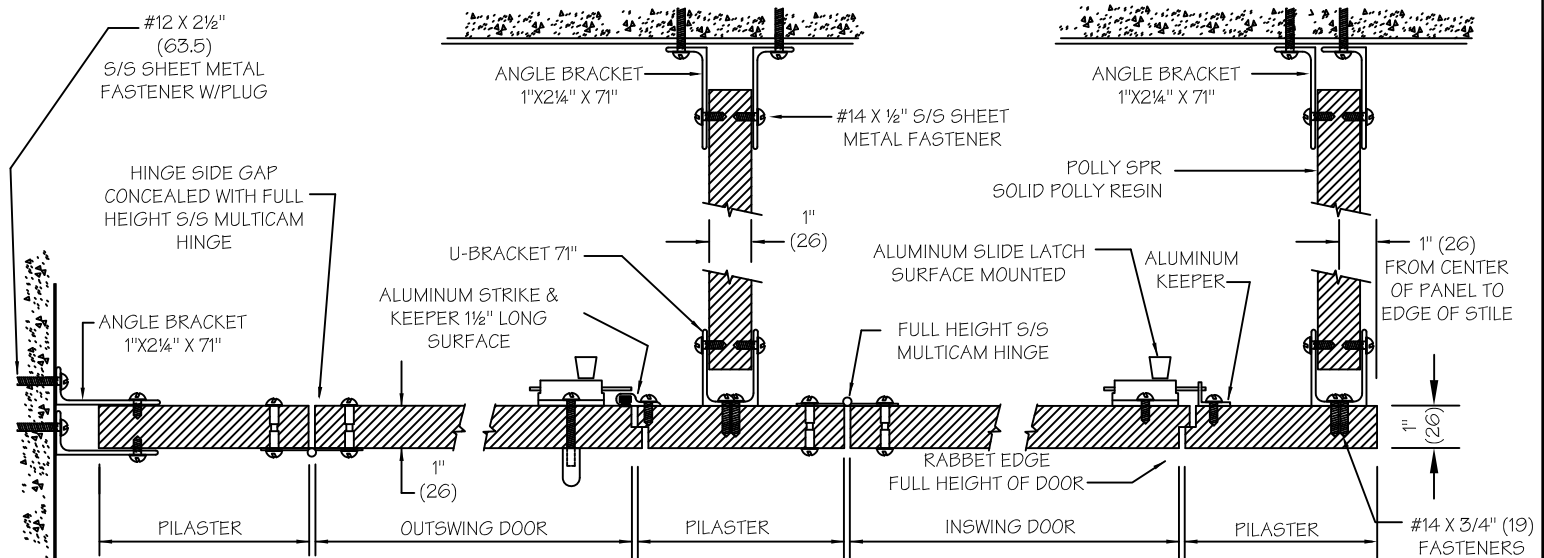


FRONT ELEVATION



SIDE ELEVATION

NOTES: This drawing is a standard detail intended to show general construction and specification information. See shop drawings for actual job layout and specific job conditions which supercede any conflicting information on this sheet. Blocking (by others) or adequate support within wall required to support brackets.



METPAR CORP

95 State Street, Westbury, NY 11590

Tel: 516-333-2600 Fax: 516-333-2618

www.Metpar.com ~ Sales@Metpar.com

POLLY®

Special Detail FT700M
Dorian Max Style W/Full Privacy

FT700PYM.DWG

03/05/2021