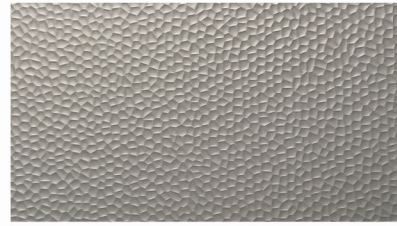




SOLID PLASTIC

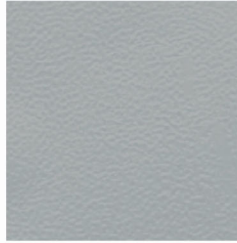
NEW
HAMMERED FINISH



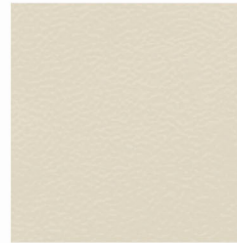
HAMMERED NICKEL H-690 (X)



BLACK 910 (E)(F)



GREY DAWN 700 (E)(F)

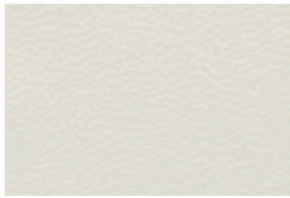


ALMOND 300 (E)



COFFEE 240 (E)

STANDARD COLORS



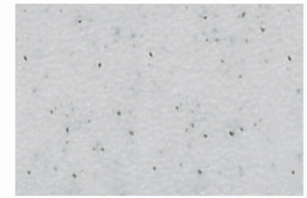
CREAM 180 (F)



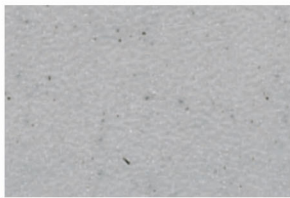
PLATINUM 630



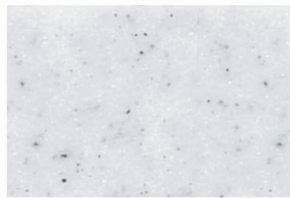
VIOLET BLUE 780 (F)



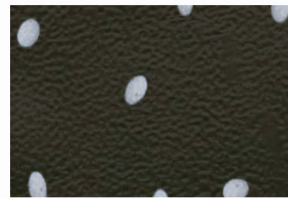
STONE GRANITE 638



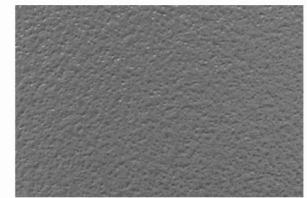
GREY GRANITE 658



WHITE GRANITE 138



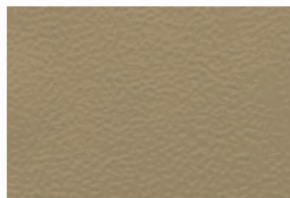
GALACTICA 928 (F)



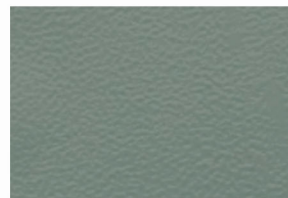
CHARCOAL 675



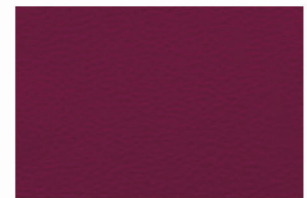
EVERGREEN 580 (X)



KHAKI 520 (X)



PALE GREEN 510 (X)



CLARET 460 (X)

(X) Non-Stock color may require extended lead time (Consult Factory)

(E) Express Ship is available in standard part sizes, in Overhead Braced style, and with wrap-around hinges. Quantities greater than 10 stalls may require additional time.

(F) Color is also available in NFPA 286 material at an up-charge. Inquire within for details.

! Swatches are a printed representation of the color. Please view an actual sample prior to making your final selection. Request samples via samples@metpar.com

NEW YORK
95 STATE STREET
WESTBURY, NY 11590
516-333-2600

TENNESSEE
3024 CHEROKEE ROAD
MORRISTOWN, TN 37814
516-333-2600

FLORIDA
7211 ANDERSON ROAD
TAMPA, FL 33634
516-333-2600

UTAH
2180 SOUTH 300 WEST #104
SALT LAKE CITY, UT 84115
516-333-2600

CONTACT
WWW.METPAR.COM
SALES@METPAR.COM
516-333-2600