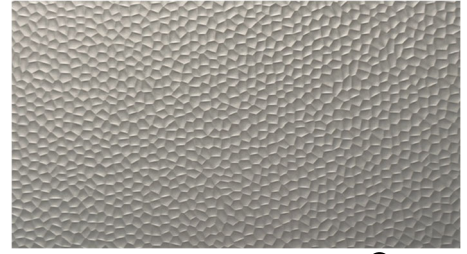




# SOLID PLASTIC



HAMMERED NICKEL H-690 (X)



BLACK 910 (E)(F)



GREY DAWN 700 (E)(F)



COFFEE 240 (E)



ALMOND 300 (E)

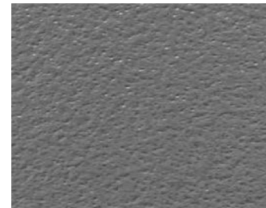
## STANDARD COLORS



CREAM 180 (F)



PLATINUM 630



CHARCOAL 675



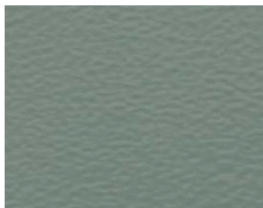
WHITE GRANITE 138



STONE GRANITE 638



GREY GRANITE 658



PALE GREEN 510 (X)



EVERGREEN 580 (X)



CLARET 460 (X)



GALACTICA 928 (F)

(X) Non-Stock color may require extended lead time (Consult Factory)

(E) Express Ship is available in standard part sizes, in Overhead Braced style, and with wrap-around hinges. Quantities greater than 10 stalls may require additional time.

(F) Color is available in NFPA 286 material at an up-charge. Inquire for details.

! Swatches are a printed representation of the color. Please view an actual sample prior to making your final selection. Request samples via [samples@metpar.com](mailto:samples@metpar.com)

**NEW YORK**  
95 STATE STREET  
WESTBURY, NY 11590  
516-333-2600

**TENNESSEE**  
3024 CHEROKEE ROAD  
MORRISTOWN, TN 37814  
516-333-2600

**FLORIDA**  
7211 ANDERSON ROAD  
TAMPA, FL 33634  
516-333-2600

**UTAH**  
2180 SOUTH 300 WEST #104  
SALT LAKE CITY, UT 84115  
516-333-2600

**CONTACT**  
[WWW.METPAR.COM](http://WWW.METPAR.COM)  
[SALES@METPAR.COM](mailto:SALES@METPAR.COM)  
516-333-2600