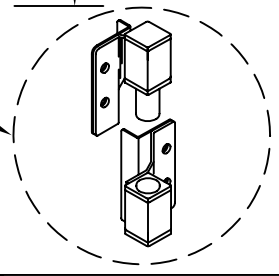
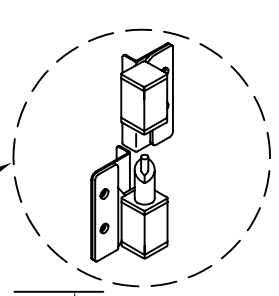
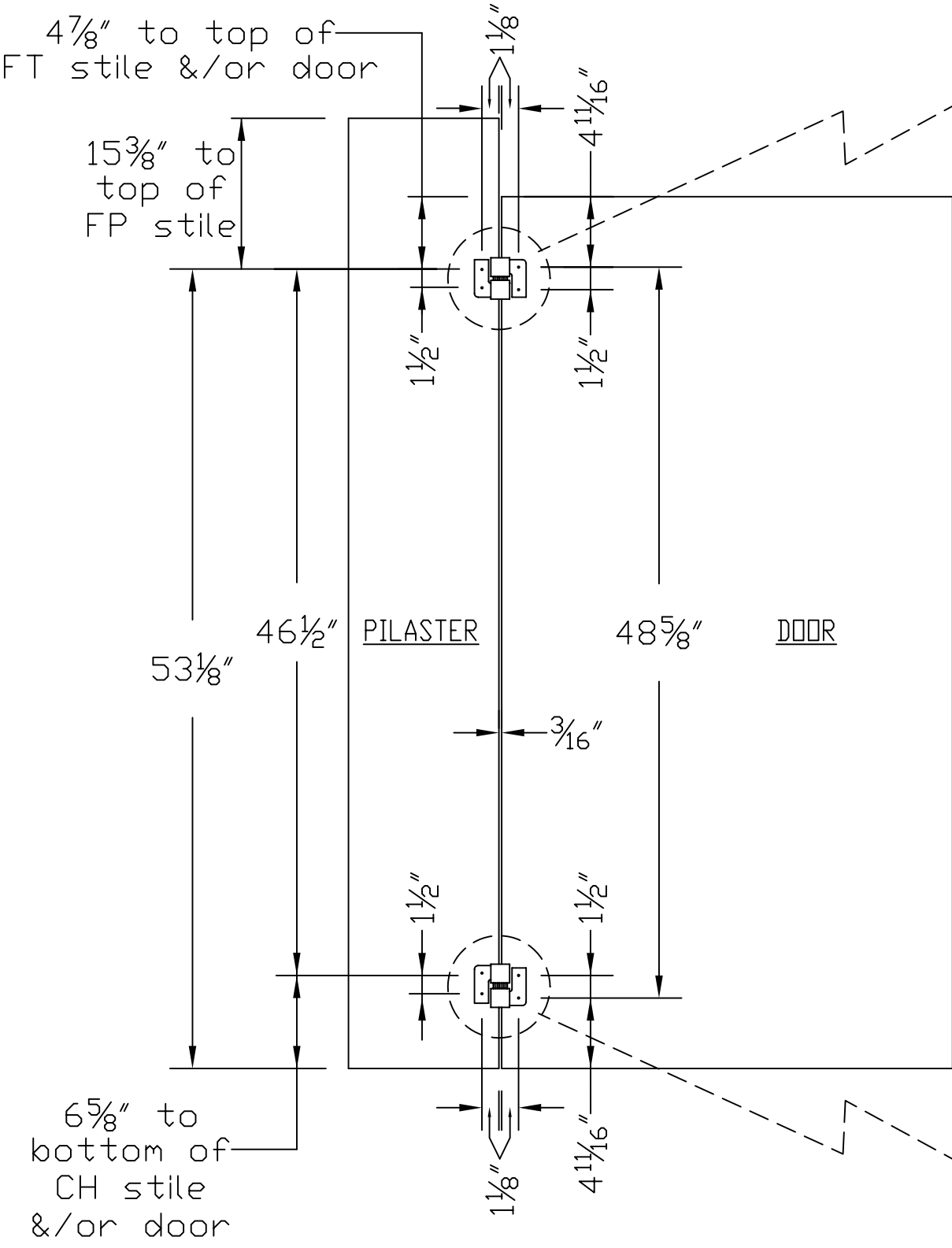
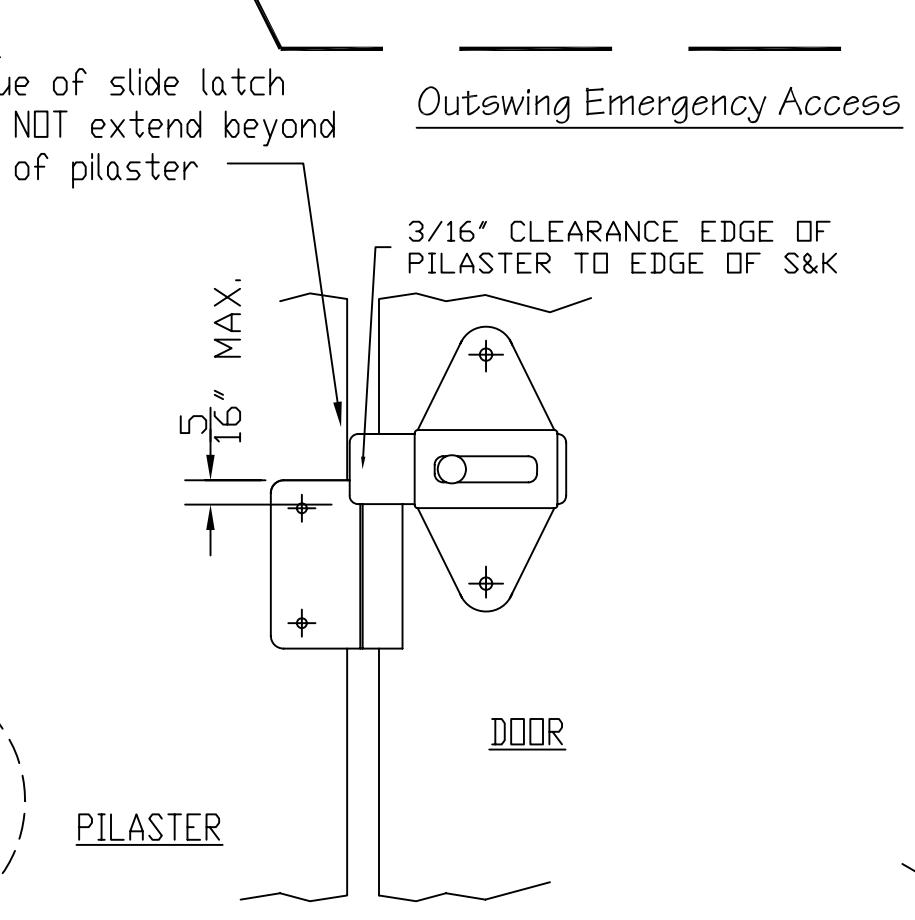
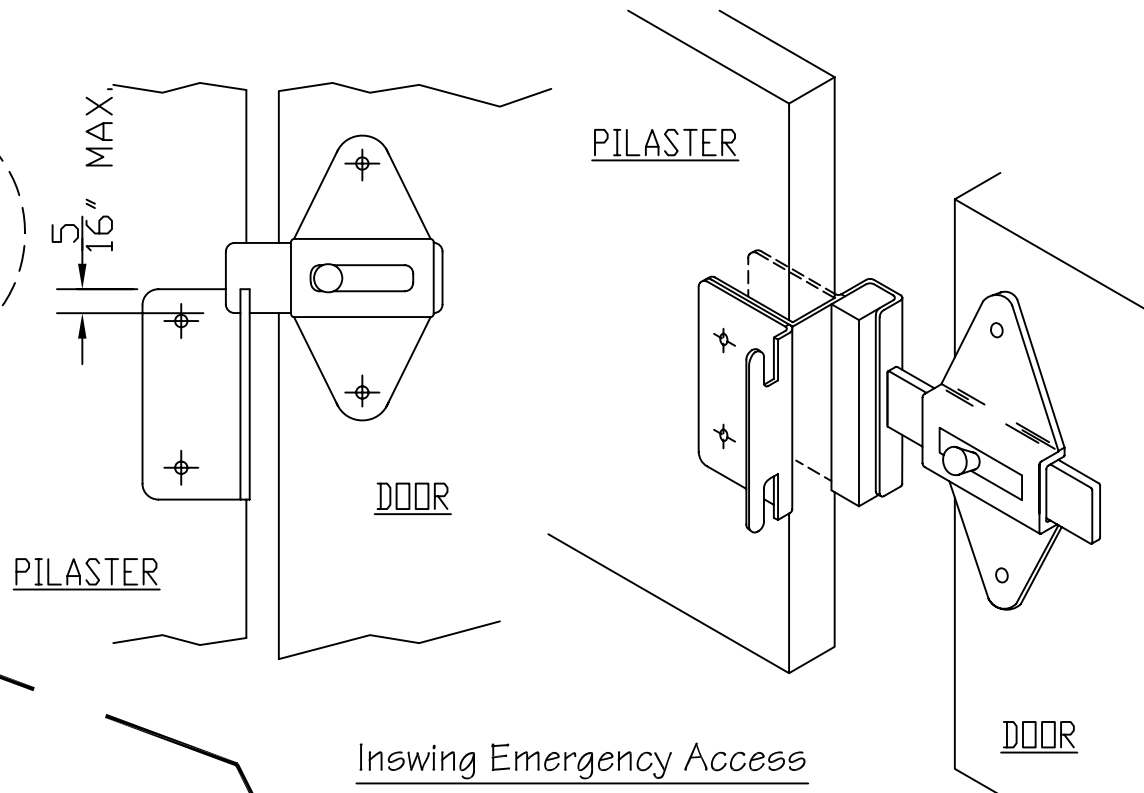


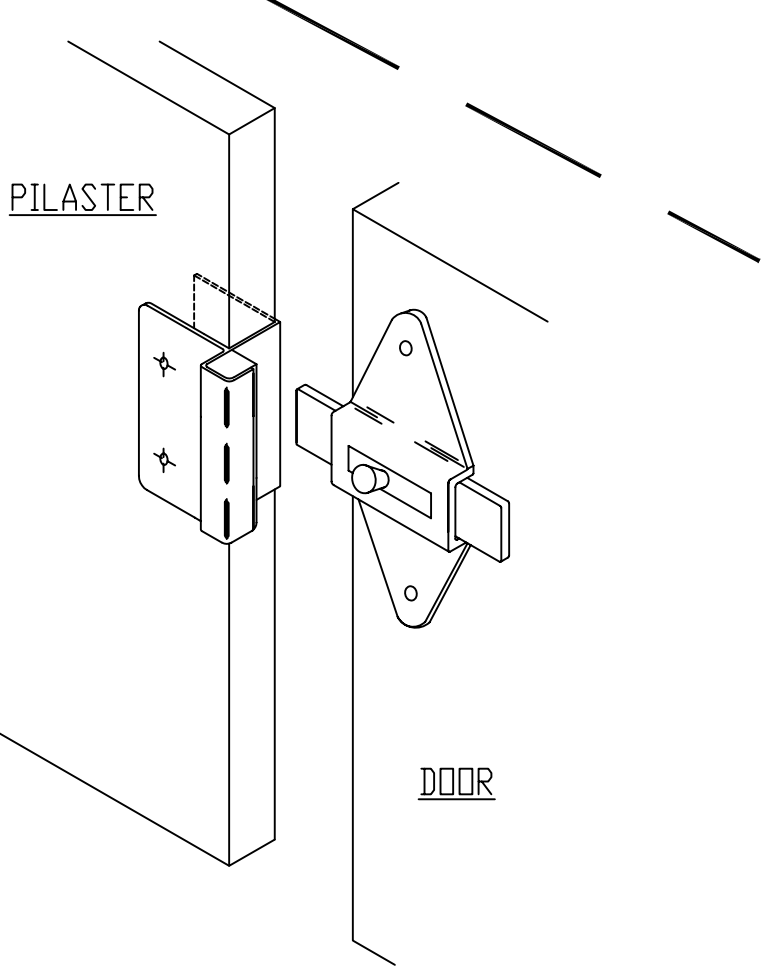
Stainless Steel Surface Hinges



NOTE:
Tongue of slide latch must NOT extend beyond edge of pilaster



- ### Installation Instructions
- Fasten top and bottom hinge brackets to the pilaster. (make sure that hinge bracket with the beveled cam is located at upper connection). At this point the cam can be rotated to adjust angle of the door in the rest position.
 - Fasten top hinge bracket only to top of door.
 - Mount the door by placing the top door hinge on top of the top pilaster hinge.
 - Slide bottom hinge of door into bottom hinge of pilaster and fasten bracket to door.
 - NOTE:** This must be installed with Metpar Corp approved fasteners.





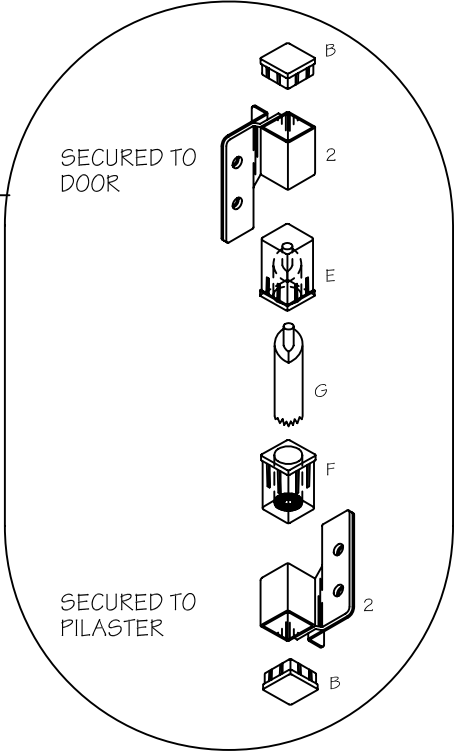
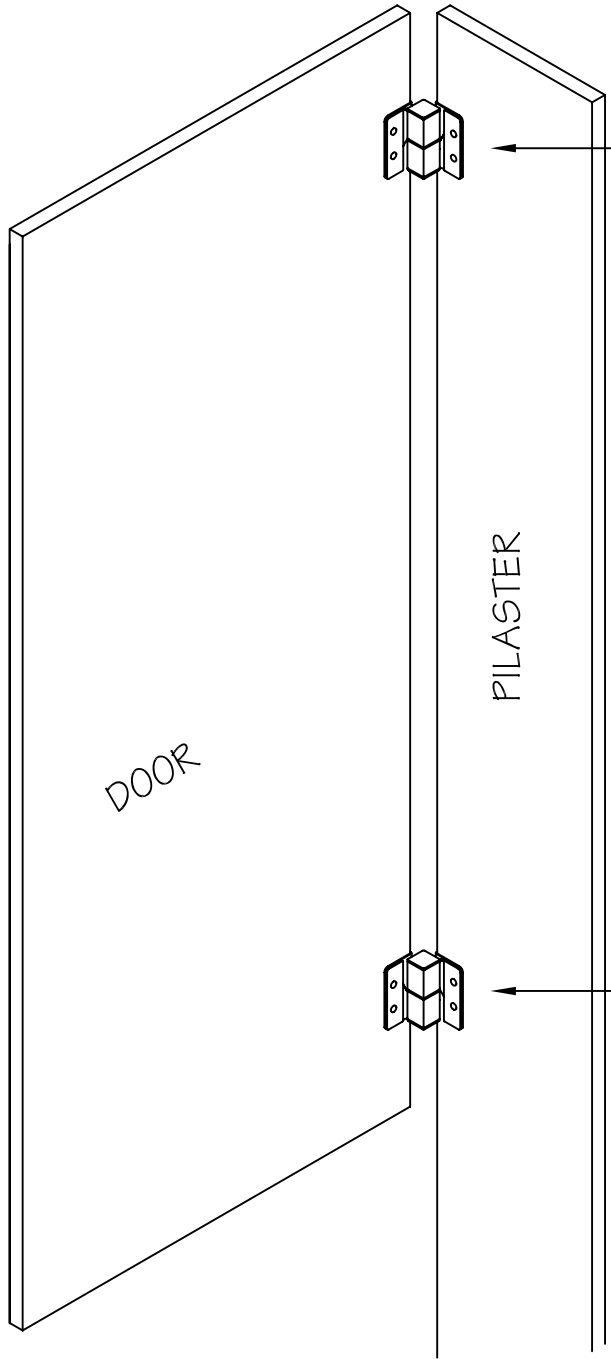
METPAR CORP.

URL: <http://www.Metpar.com> Email: Service@Metpar.com

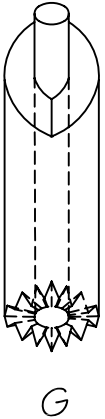
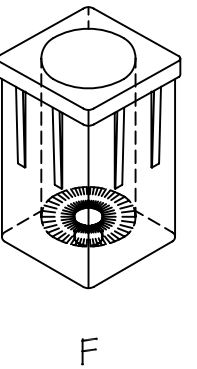
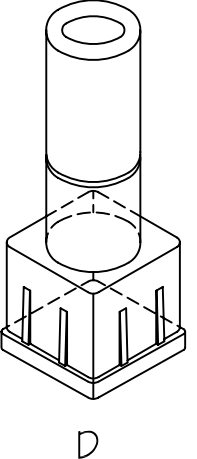
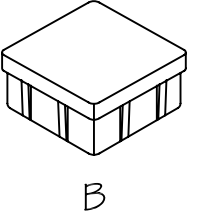
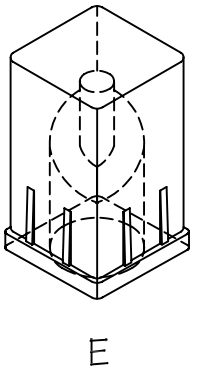
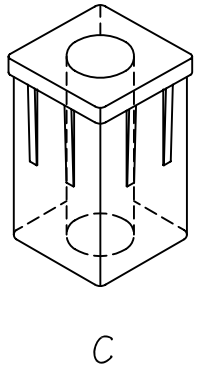
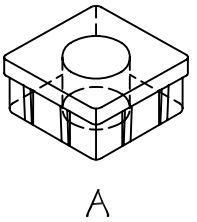
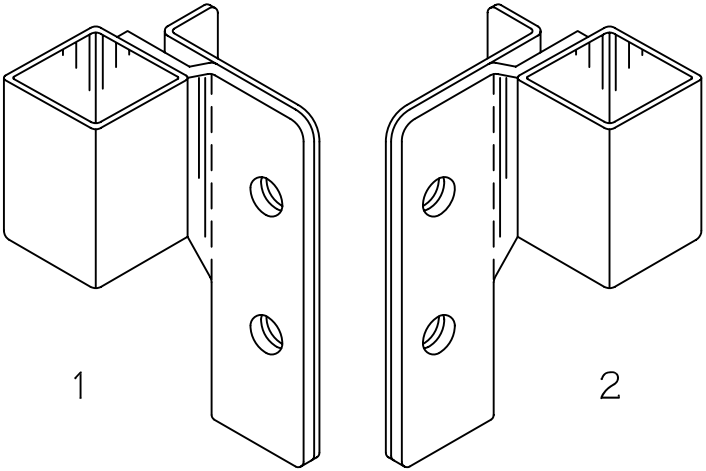
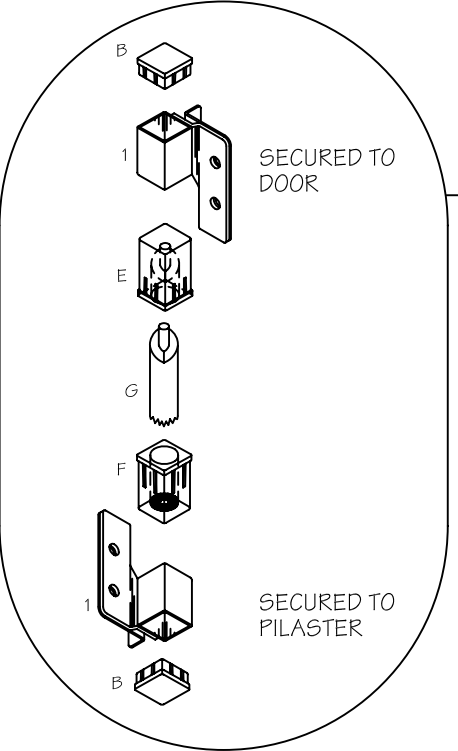
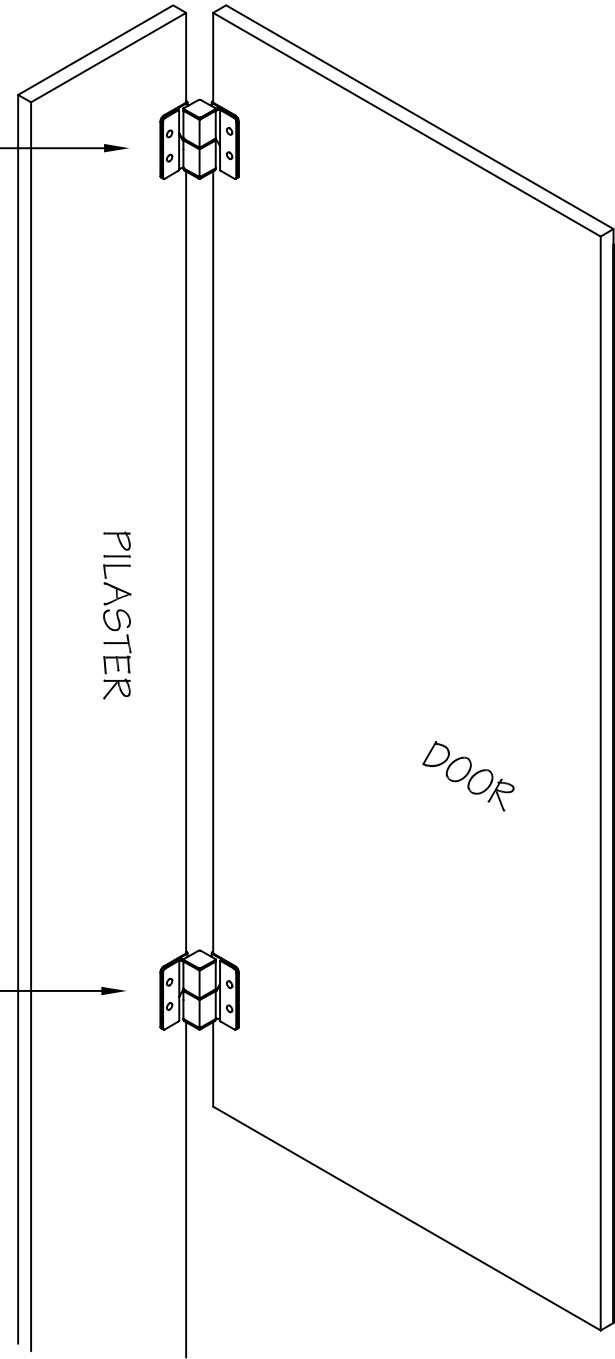
NOTES:
17/64" diameter clearance holes typical.

Door Swing Reversal with
Stainless Steel Surface Hinges

LEFT HAND INSWING OR
RIGHT HAND OUTSWING



RIGHT HAND INSWING OR
LEFT HAND OUTSWING



METPAR CORP.

URL: <http://www.Metpar.com> Email: Service@Metpar.com

DOOR SWING REVERSAL INSTRUCTIONS:
To change door swing, simply remove plastic components from hinges and reconfigure per diagrams.
NOTE:
Hinges must be installed as shown to prevent removal of door.